

The Mission Bell

Mission Statement - "By God's grace, Central City Lutheran Mission is a community of hope, healing, and empowerment in the heart of the city."

A Periodic Newsletter of Central City Lutheran Mission

December 2014

Progress & Possibilities

We celebrate progress and look forward to possibilities.



Page 1

Grant Thanks

Grant projects thanks to Bank of America, Union Pacific, and City of San Bernardino



Page 2

CCLM Grant Funders

CCLM's numerous grant funders support a wide variety of programs with your help.

Page 2

Christmas Cheer

Clothes for Men. Toys for Kids. Shelter for the Holy Family.



Page 2

Pastor's Message

Parting words from Pastor David Nagler.

Page 3

2015 Schedule

Mark your calendars for CCLM routine and special events.



Page 3

Progress and Possibilities

Thanks to you, CCLM is a unique place where diverse community members gather to bless each other. We continue to see progress & new possibilities in serving this community.

We consider new possibilities arising with a change of leadership as we recognize the accomplishments you have helped CCLM realize since 2012, when David Nagler came to serve as Pastor and CEO of CCLM. Since then, with your help, besides core food, housing, & education programs, CCLM has been able to:

- strengthen Mission relationships & support
- add bus & van medical & job transportation
- rebuild a community garden
- make a transitional house for homeless men
- contract with the CalState Reentry Initiative (CSRI) to house formerly incarcerated men
- establish Sunday evening worship and congregation-provided community meals
- convert the men's cold-weather shelter to a year-round case-managed program
- build a new playground
- redefine CCLM's social media presence
- renovate the sanctuary
- establish a 5-year renewable lease with Central Neighborhood Health Foundation to run H Street Clinic as a Federally Qualified Health Center to serve more people with additional services.

Pastor Nagler spent the last few months serving in his new call as Senior Pastor at Christ Lutheran Church, Pacific Beach, CA, while working with the CCLM Board on a transition plan for executive leadership.

The resulting interim arrangement with Lutheran Social Services of Southern California (LSS-SC) will provide an Interim Executive Director and other resources to work with the CCLM staff, CCLM Board, and community for a trial period.

This new possibility intends to expand our capacity, relationships, and resources within a larger organization, while retaining the unique programs & community-orientation of CCLM

The **values of LSS-SC** might sound familiar:

- We **EMBRACE** those in crisis, with short-term, emergency services
- We **EQUIP** individuals and families, with program resources to help them on their journey
- We **EMPOWER** people to break the cycle of poverty, live with dignity and become self-sufficient

The **LSS-SC Mission** also echoes CCLM's: Lutheran Social Services of Southern California celebrates the love of Christ for all people through acts of service.

We strive to walk with those in need in Southern California by embracing those in crisis, equipping individuals and families, and empowering them to live with integrity, dignity and self-sufficiency.

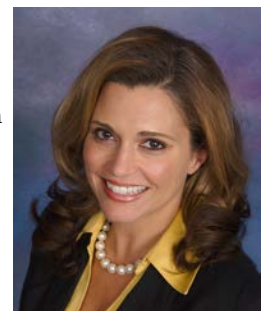
(From: <http://www.lsscommunitycare.org/>)

What can you do?

1. All of our programs continue as we work through this interim period, so your donor, volunteer, and other partnership efforts in mission are critical to our community.
2. We invite your prayers as we seek to discern:
 - Will our community be as well served by joining together as it appears based on our mutually compatible values & missions?
 - Are CCLM's programs and services, and LSS-SC's capacity mutually beneficial?
 - Will both organizations relational resources and assets be combined in mutual support?
 - Will this merger preserve and serve what is valuable, unique, & precious within this indescribable CCLM community?

CCLM is committed to bringing the best resources and programs and to work together to bring new opportunities and possibilities to San Bernardino.

New Contact:
Amy Fawcett, Interim
Executive Director
afawcett@cclm.org



Giving Grant Thanks

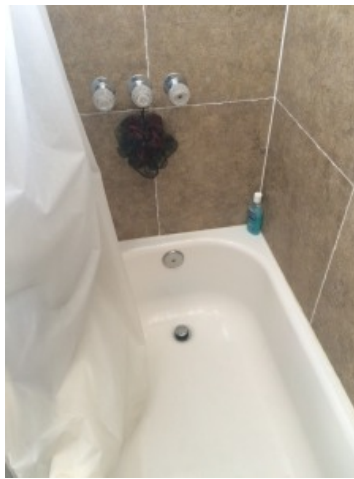


CCLM is blessed to have completed a wide variety of initiatives supported in part by grants, which provide important resources. We couldn't pursue these grants without the support of staff, volunteers, residents, and donors.

- Bank of America recently provided \$2500 in support for our free hot meal program. CCLM prepares lunch for over 100 people each day.
- Thanks to a grant from [Union Pacific](#), CCLM implemented a food voucher program for supportive housing clients. CCLM houses 36 individuals in 10 houses for people living with HIV. Food security & nutrition are challenges for any homeless population. Nutritious food high in protein is specifically required to maintain lean body mass and provide essential building blocks for a healthy immune system. Food vouchers gave to those without CalFresh benefits access to healthy fruits and vegetables which are less available at free food giveaways.
- CCLM recently completed significant repairs on 5 of the Supportive Housing residences made possible in part by a grant from the S.L. Gimbel Foundation Advised Fund at [The Community Foundation](#) Serving the Counties of Riverside and San Bernardino. These repairs included some visible changes like new carpet, paint, bathrooms, and kitchen cabinets, and some repairs hidden beneath walls and floors. This grant also provided stipends for labor provided by men from our emergency shelter and transitional house.



Floor replacement



Bathroom remodel



Kitchen cabinet & counter replacement



Thank You
to ALL our
Volunteers,
Donors, Supporters,
and Mission Partners!

*Left: ELCA God's Work, Our Hands day turned out to be a muddy day for Lutherans to prepare a playground. But the workers were valiant!
Center: Church of Jesus Christ, Latter-Day Saints young folk assemble playground equipment.*

*From mornings during aerobics to noon hot meal with parents to the After School Program, children enjoy playing on this unit. Come visit us & see!
Our thanks to the City of San Bernardino for the seed money for the playground provided through the Community Development Block Grant (CDBG).*

CCLM Grant Funders:

- | | | | |
|---------------------------------------|---|-----------------------------|----------------------------------|
| ◆ Bank of America | ◆ Diocese of San Bernardino | ◆ SANBAG/Omnitrans | ◆ Stater Bros |
| ◆ CalState Re-entry Initiative (CSRI) | ◆ ELCA Foundation | ◆ San Bernardino City | ◆ Thrivent Financial |
| ◆ The Community Foundation | ◆ Emergency Food & Shelter Prgm | ○ Community Dev Block Grant | ◆ Valley Transportation Services |
| ◆ Dignity Health | ◆ Housing Opportunities for People w/AIDs | ○ Emergency Solutions Grant | ◆ Walmart |
| | ◆ Kaiser Foundation | ○ Unified School District | ◆ Union Pacific |
| | ◆ Mary Ann Brunner Foundation | ◆ San Bernardino County ESG | ◆ US Dept Housing & Urban Dev |
| | ◆ Pacifica Synod/ELCA | ◆ Southern CA Edison | |

Since grants cover specific projects and most have matching requirements, CCLM could not take advantage of grant funds without donor, volunteer, staff, and cooperating agency support. All of us together in partnership make the conditions for hope and the changes we see.

Christmas Cheer for all ages



We thank First Lutheran Church, Redlands, Lutheran Church of Our Savior, San Bernardino, and all the donors of clothes and funds, as well as the volunteers who made sure that the men had a night of kindness, music, and treats. Homeless men received pants, shirts, socks, jackets underwear, scarves, gloves, knit hats, and shoes.

We also thank all the donors who provided gifts and Christmas cheer for the children served by our After School Program.



Las Posadas: Mary & Joseph were once more wandering around looking for shelter this season and we were honored that yet again, Jesus the Christ, and his immediate family found a place to be birthed here at CCLM where so many of our community also find welcome. This cherished tradition includes songs, piñatas, and fun for children & adults. As we sing when the innkeepers welcome the pilgrims in:

Entren, santos peregrinos, peregrinos, Reciban este rincón, No de esta pobre morada, Sino de mi corazón.
In English: Enter holy pilgrims, Receive this corner, Not of this poor dwelling, But of my heart.

Parting Words

As I come to the end of my time as Pastor / CEO of CCLM, I wanted to share a few thoughts with all of you, our faithful supporters.

I have discovered that the genius of CCLM is that it is a place of mutual transformation. Both the people who arrive as clients and those who come to help are changed by the interactions and the work of the Holy Spirit. We don't have a group that "needs fixing" and another group of "fixers", but we are as Luther said "all beggars telling other beggars where to find food and drink." I know this personally as I have been forever changed by my time here. The people in this neighborhood and their struggles and joys have become part of my story.

Therefore, I want to end with words of gratitude. I am grateful for the church and its leaders for work that they have done to make CCLM a reality and for offering me the chance to serve here. I am thankful for my predecessor, the Rev. David Kalke for his vision and passion for justice. I am indebted to my colleagues on staff and the resident volunteers who are the heart and soul of this mission. Finally, I appreciate all of you who have supported CCLM with your prayers, financial gifts, and volunteer hours.

This mission is a unique and powerful witness to the love of God in Jesus Christ. It has been an honor and the most enjoyable call in my career and I am grateful to God for this chapter in my life. May God bless the ongoing ministry of CCLM.

- Pastor David Nagler



2015 Schedule

Aerobics

Tues, Wed, Thurs, & Fri at 9 a.m.

Community Free Meal

Monday-Friday at noon

Contemplative Prayer

Wednesdays at 8:30 a.m.

Food Pantry

1st & 3rd Tues at 8 a.m.

ESL

Tues & Thurs at 6 p.m.

Worship

Join us at 5 p.m. on Sundays for worship service concluding with a community meal open to all.



Central City Lutheran Mission

For a calendar and other information, visit
www.cclm.org
 or call (909) 381-6921.



Central City Lutheran Mission

H o p e , H e a l , E m p o w e r

Non Profit Organization
U.S. Postage Paid
San Bernardino CA
Permit No 2180

1354 North G. Street
San Bernardino, CA 92405